

Geared Motors Planetary Gearboxes

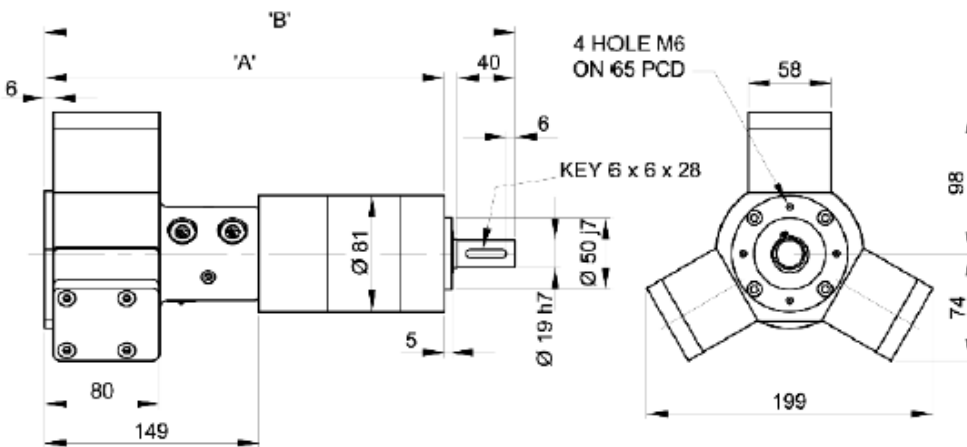
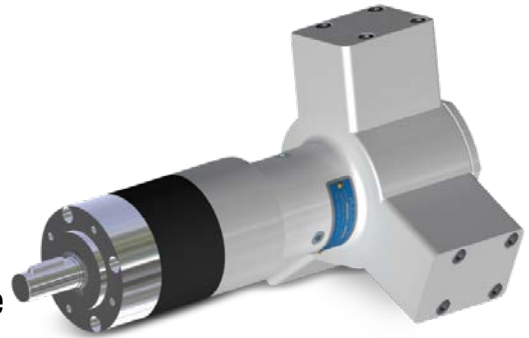
Key Data: Dynatork 3 Aluminium

Motor Ref:
(Non-Lube) 931.35

for use with a dry, clean, non-lubricated air supply

Maximum diameter (mm)	210
Output shaft dia.(mm)	19
Output shaft effective length (mm)	40
Maximum radial shaft load (N)	600
at (L) distance from face (mm)	20
Max. continuous output torque (Nm)	80
Weight 1 stage (kg)	5.85
Weight 2 stage (kg)	6.85
Weight 3 stage (kg)	8.85

- Available with Dynatork 1 and 3 Motors
- Robust, Compact and efficient planetary gear units
- Ratios from 3.7:1 to 308:1
- Output speeds from 0.32 to 135 rev/min
- Maximum continuous output torque for single stage gearboxes is 20Nm, two stage 60Nm and three stage 80 Nm.



Dynatork 3	Dim A	Dim B
1-Stage	274mm	323mm
2-Stage	296mm	345mm
3-Stage	318mm	367mm

Speed/Ratio Selection		Ratio Order Ref										
Motor ref:	931.35	01	02	03	04	05	06	07	08	09	10	11
Ratio:1 rev/min		3.7	6.75	13.73	19.2	25	29	46	51	93	169	308
500	•	135.1	74.1	36.4	26.0	20	17.2	10.9	9.8	5.4	3.0	1.6
400	•	108.1	59.3	29.1	20.8	16	13.8	8.7	7.8	4.3	2.4	1.3
300	•	81.1	44.4	21.8	15.6	12	10.3	6.5	5.9	3.2	1.8	1.0
200	•	54.1	29.6	14.6	10.4	8	6.9	4.3	3.9	2.2	1.2	0.6
100	•	27.0	14.8	7.3	5.2	4	3.4	2.2	2.0	1.1	0.6	0.3
		Single Stage			Two Stage				Three Stage			

For Output Torque

- 1 Locate the motor speed on the torque/speed graph on page 4 (size 1) or page 6 (size 3)
- 2 Select the appropriate input air pressure curve and, for the chosen speed, read off the torque on the vertical axis
- 3 Multiply this value by the chosen ratio to give the output torque