

# Geared Motors Helical Gearboxes

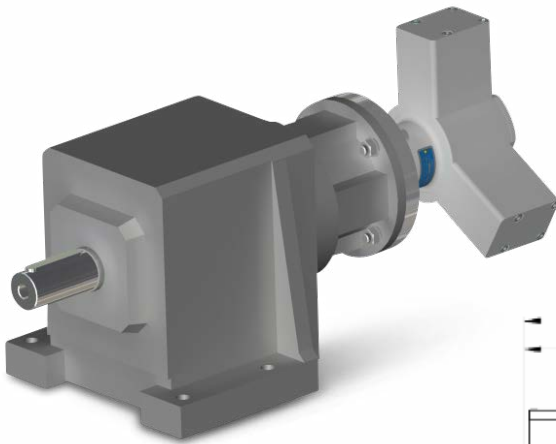
## Key Data: Dynatork 7 - 937

Motor Ref:

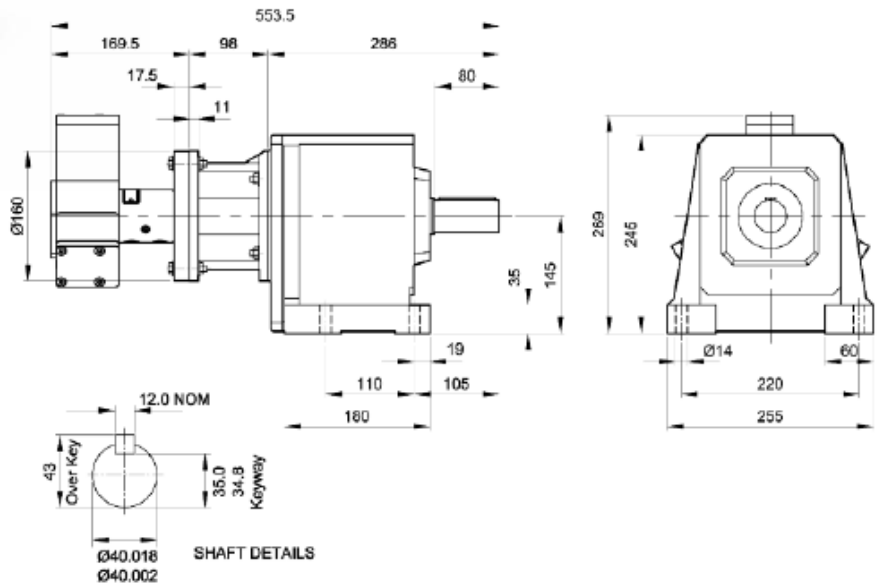
**(Non-Lube) 937.75**

for use with a dry, clean, non-lubricated air supply

Output shaft diameter (mm)	40
Output shaft effective length (mm)	80
Maximum radial shaft load (kN)	7.0
at (L) distance from face (mm)	40
Max. continuous output torque (Nm)	550
Weight (kg)	48.5



- Helical gears for arduous and continuous running
- Ratios from 80:81 to 270.2:1
- Output speeds from 0.37 to 4.95 rev/min
- Maximum continuous output torque 550Nm



### For Output Torque

- 1 Locate the motor speed on the torque/speed graph on page 8
- 2 Select the appropriate input air pressure curve and, for the chosen speed, read off the torque on the vertical axis
- 3 Multiply this value by the chosen ratio to give the output torque

### HOW TO ORDER

Combine the MOTOR REF. with the RATIO ORDER REF. found in the Speed/Ratio selection table, eg - **937.75.06**  
= non lube, 216.9:1 ratio

Speed/Ratio Selection		Ratio Order Ref						
Motor ref:	<b>937.75</b>	01	02	03	04	05	06	07
Ratio: 1		80.81	90.32	107.7	134.6	180.4	216.9	270.2
rev/min								
400	•	4.95	4.43	3.71	2.97	2.22	1.84	1.48
300	•	3.7	3.32	2.79	2.23	1.66	1.38	1.11
200	•	2.47	2.21	1.86	1.49	1.11	0.92	0.74
100	•	1.24	1.11	0.93	0.74	0.55	0.46	0.37