

Geared Motors Helical Gearboxes

Key Data: Dynatork 3 - 936

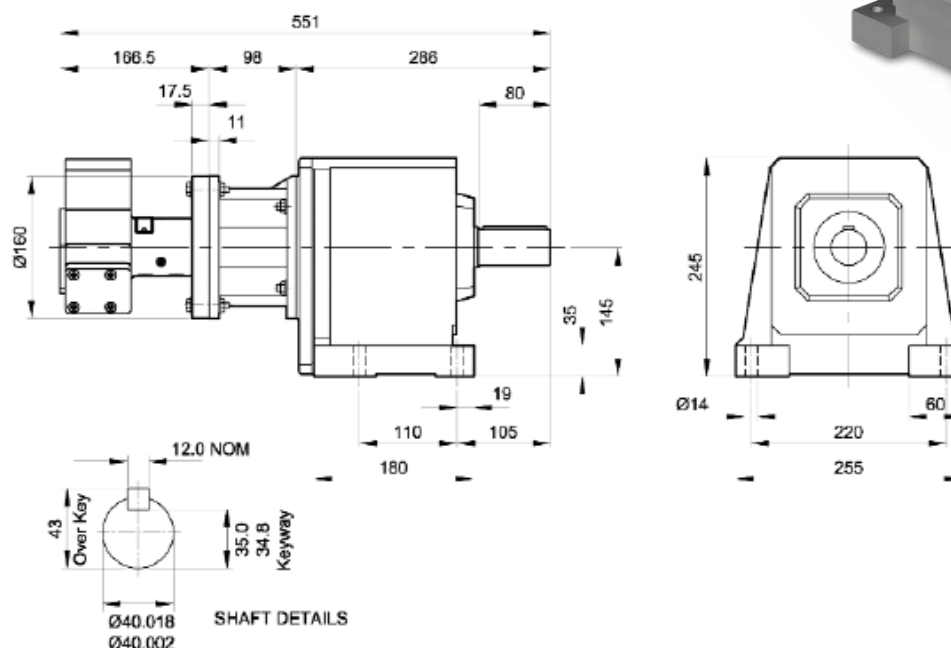
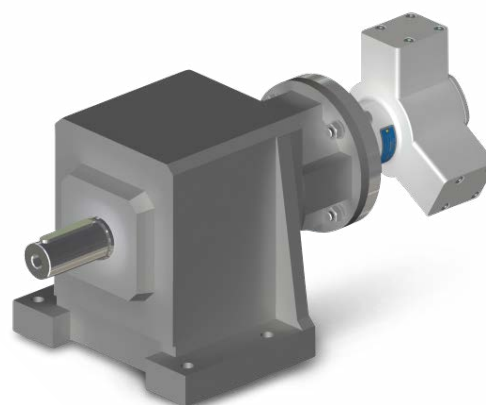
Motor Ref:

(Non-Lube) 936.35

for use with a dry, clean, non-lubricated air supply

Output shaft diameter (mm)	40
Output shaft effective length (mm)	80
Maximum radial shaft load (kN)	7.0
at (L) distance from face (mm)	40
Max. continuous output torque (Nm)	550
Weight (kg)	48.35

- Helical gears for arduous and continuous running
- Ratios from 25:1 to 69.88:1
- Output speeds from 1.43 to 20 rev/min
- Maximum continuous output torque 550Nm



For Output Torque

- 1 Locate the motor speed on the torque/speed graph on page 6 (size 3)
- 2 Select the appropriate input air pressure curve and, for the chosen speed, read off the torque on the vertical axis
- 3 Multiply this value by the chosen ratio to give the output torque

Speed/Ratio Selection	Ratio Order Ref									
Motor ref: 936.35	01	02	03	04	05	06	07	08	09	
Ratio:1 rev/min	25	31	34.8	41.71	46.67	50.2	56.1	62.5	69.88	
500	•	20	16.1	14.4	12.0	10.7	9.96	8.91	8.00	7.16
400	•	16	12.9	11.5	9.6	8.6	7.97	7.13	6.40	5.72
300	•	12	9.7	8.6	7.2	6.4	5.98	5.35	4.80	4.29
200	•	8	6.5	5.7	4.8	4.3	3.98	3.57	3.20	2.86
100	•	4	3.2	2.9	2.4	2.1	1.99	1.78	1.60	1.43

HOW TO ORDER

Combine the MOTOR REF. with the RATIO ORDER REF. found in the Speed/Ratio selection table, eg - **936.35.06**
= non lube, 50.2:1 ratio