

# Geared Motors Helical Gearboxes

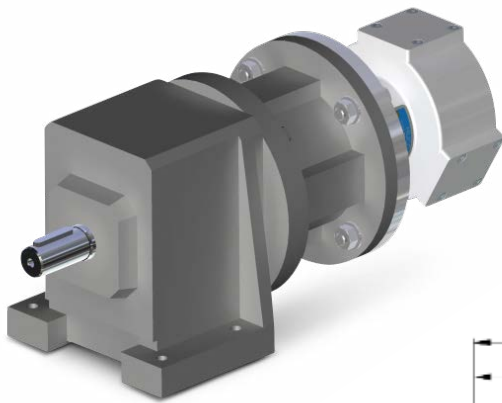
## Key Data: Dynatork 1 - 932

### Motor Ref:

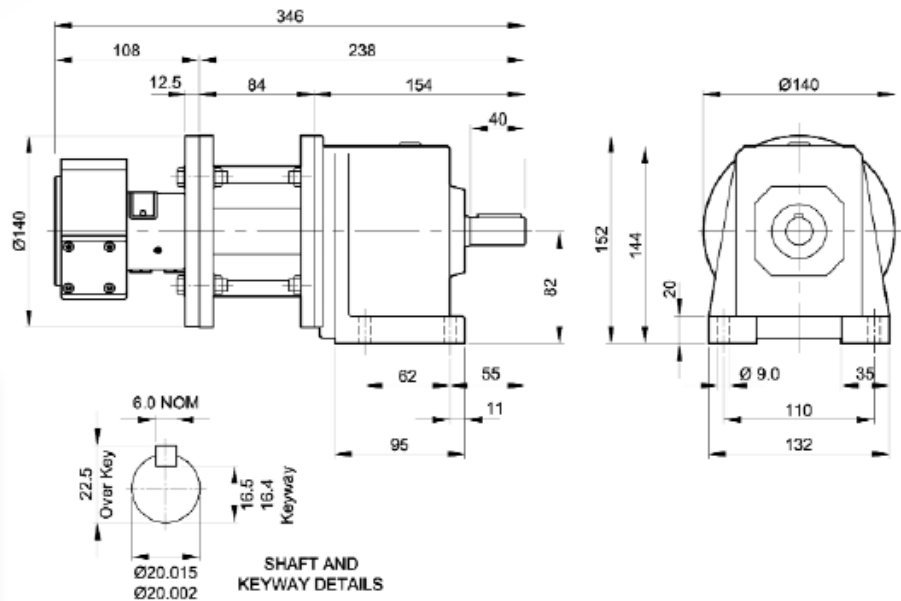
**(Non-Lube) 932.15**

for use with a dry, clean, non-lubricated air supply

|                                    |       |
|------------------------------------|-------|
| Output shaft diameter (mm)         | 20    |
| Output shaft effective length (mm) | 40    |
| Maximum radial shaft load (kN)     | 1.9   |
| at (L) distance from face (mm)     | 20    |
| Max. continuous output torque (Nm) | 60    |
| Weight (kg)                        | 10.35 |



- Helical gears for arduous and continuous running
- Ratios from 4:1 to 49:1
- Output speeds from 4.1 to 150 rev/min
- Maximum continuous output torque 60Nm



### For Output Torque

- 1 Locate the motor speed on the torque/speed graph on page 4 (size 1)
- 2 Select the appropriate input air pressure curve and, for the chosen speed, read off the torque on the vertical axis
- 3 Multiply this value by the chosen ratio to give the output torque

### HOW TO ORDER

Combine the MOTOR REF. with the RATIO ORDER REF. found in the Speed/ Ratio selection table, eg - **932.15.06**  
= non lube, 16:1 ratio

| Speed/Ratio Selection |        | Ratio Order Ref |     |     |    |      |       |      |       |      |      |
|-----------------------|--------|-----------------|-----|-----|----|------|-------|------|-------|------|------|
| Motor ref:            | 932.15 | 01              | 02  | 03  | 04 | 05   | 06    | 07   | 08    | 09   | 10   |
| Ratio:1               |        | 4               | 5.4 | 6.8 | 10 | 12.5 | 16    | 21.5 | 30    | 40   | 49   |
| 600 rev/min           | •      | 150             | 111 | 88  | 60 | 48   | 37.5  | 27.9 | 20    | 15   | 12.2 |
| 500                   | •      | 125             | 93  | 74  | 50 | 40   | 31.25 | 23.3 | 16.67 | 12.5 | 10.0 |
| 400                   | •      | 100             | 74  | 59  | 40 | 32   | 25    | 18.6 | 13.33 | 10   | 8.2  |
| 300                   | •      | 75              | 56  | 44  | 30 | 29   | 18.75 | 14   | 10    | 7.5  | 6.1  |
| 200                   | •      | 50              | 37  | 29  | 20 | 16   | 12.5  | 9.3  | 6.67  | 5    | 4.1  |